

Premier Double Sided Seat



	6 Seater	8 Seater
Product Code	TBDSS6	TBDSS8
Length	1775mm	1975mm
Depth	900mm	900mm
Height	800mm	800mm

The 8 seater Premier Double Sided Seat is ideal for use in a range of locations such as schools, leisure centres, theme parks, parks and green spaces.

The seat is manufactured from recyclable polyethylene, a very tough and durable material meaning the seat can be located outside with very little maintenance required. The seat is also UV stabilised and will never rust or corrode.

The seating slats are available in black only and are manufactured from 100% recycled material.

Each seat is supplied with ground fixing bolts which can be used for fixing the seat to hard surfaces. If you intend to locate the seat on grass, the optional earth fixing kit would be required.

Stone Effect Colours



Red Granite



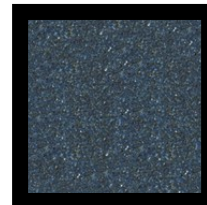
Pale Granite



Emerald



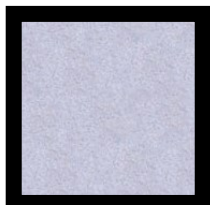
Chestnut



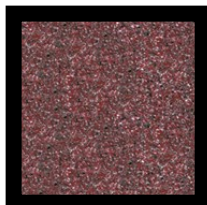
Sapphire



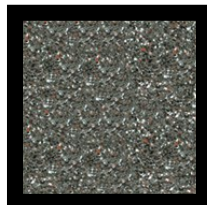
Sandstone



White Granite



Burgundy



Dark Millstone

Please note the above colours offer an approximation only and should not be used as an exact match.



Kingfisher Direct Limited, Unit 12, Retford Enterprise Centre

Randall Way, Retford, Nottinghamshire, DN22 7GR

Tel: 01777 858009 Fax: 01777 858010